

IMLC Unnao

Unnao, strategically located in central Uttar Pradesh, has its administrative headquarters at Unnao town. The district shares its boundaries with Lucknow to the east, Kanpur Nagar to the west, Hardoi to the north, and Raebareli to the south. Unnao is well-connected through major national highways such as NH-27 and NH-731, facilitating efficient regional and inter-state connectivity. The district's proximity to two major urban centers—Lucknow and Kanpur—makes it a significant industrial and logistical hub in the region.



Figure 3: Location Map

The proposed Integrated Manufacturing and Logistics Cluster (IMLC) in **Unnao** district spans **333 acre** across the villages of **Sarai Katiyan** and **Murtaja Nagar** under Tehsil **Sadar**. The site is located along the **left-hand side of the Ganga Expressway at Kilometer 422 (chainage 422+000)**. The location map for the proposed is represented in figure below;

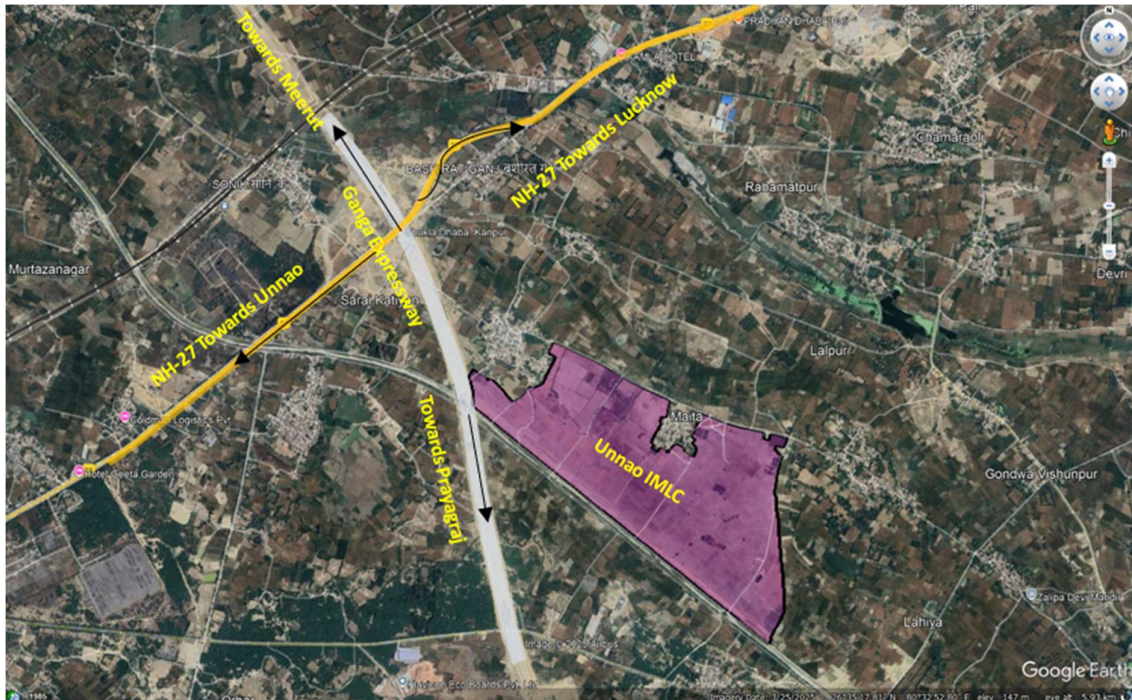


Figure 4: Proposed IMLC Location on Google Map

Sl.No.	Description	
1	Development Type	Greenfield
2	Location	This site is located under Tehsil Sadar in Unnao District, along Ganga Expressway at Kilometer 422 (CH-282+000) on the Left -hand side of the expressway.
3	Lat/Long	26.570513/ 80.584857
4	Nearest Railway Station	Sonik Railway Station, approximately 5 Km
5	Nearest ICD	● ICD Kanpur – approx. 150 Km
6	Nearest Airport	Lucknow & Kanpur Airport: 40 Km
7	One District One Product (ODOP)	Zari-Zardozi
8	Major Industries	Zari-Zardozi handicraft Industry Leather Industry

		Textile & Hosiery based Industry
9	Nearest Industrial Area	<ul style="list-style-type: none">• Kanpur 40–45 Km

The details of proposed site are provided in the table below-