

# IMLC Sambhal

**Sambhal**, located in the western part of Uttar Pradesh, has its administrative headquarters at Sambhal town. The district shares its boundaries with Moradabad to the north, Badaun to the east, Aligarh to the south, and Amroha to the west. Well-connected through national highways such as NH-9 and NH-93, the district enjoys efficient regional and inter-state connectivity.

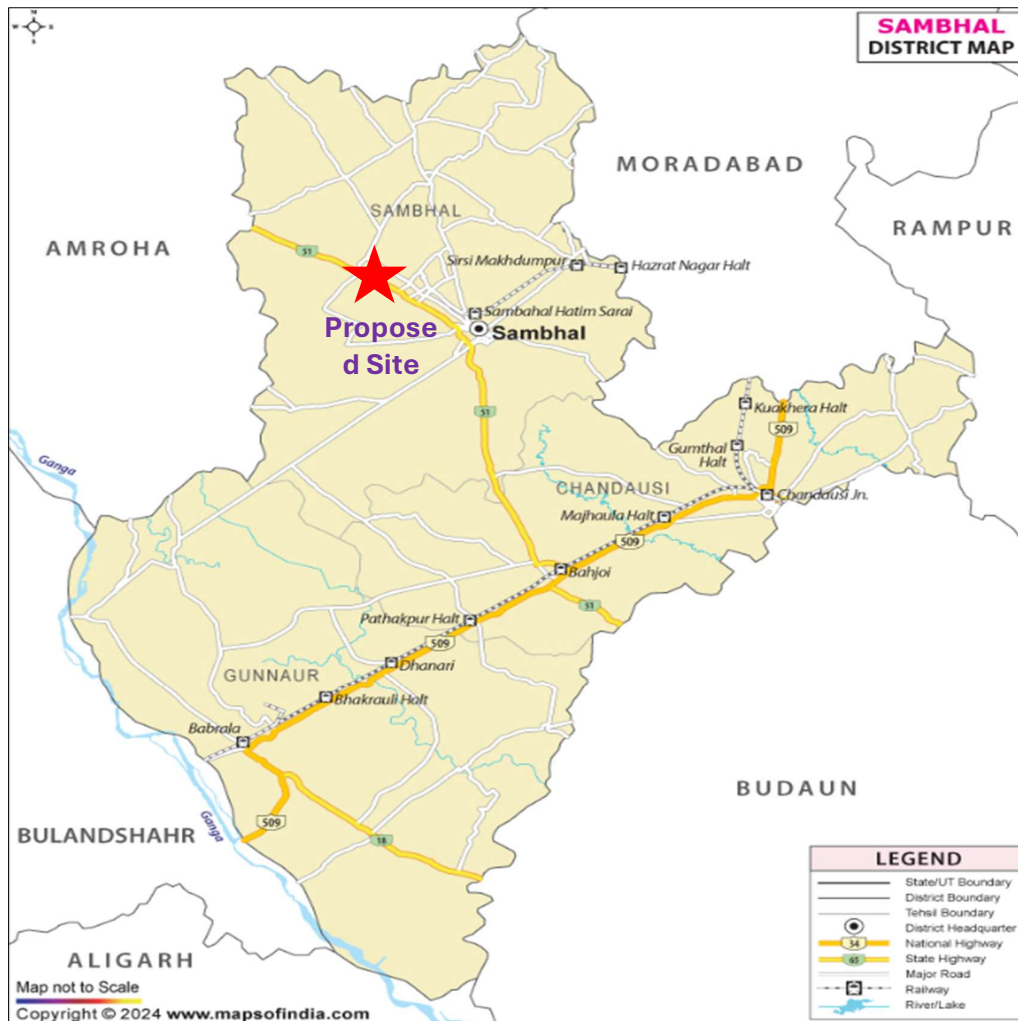


Figure 9: Location Map

The proposed **Integrated Manufacturing and Logistics Cluster (IMLC)** in **Sambhal** district is located in the village **Khirni Mohuidinpur, Basla, Sarangpur and Amawati Kutubpur** under Tehsil **Sadar** and covers an area of approximately **591 acre**. The site is situated at **kilometre 100 (100+000) on the right-hand side (RHS) of the Ganga Expressway**, measured from its starting point in Meerut. Additionally, the Sambhal–Anupshahar Road passes close to the proposed site, further enhancing its connectivity. The location map for the proposed is represented in figure below;

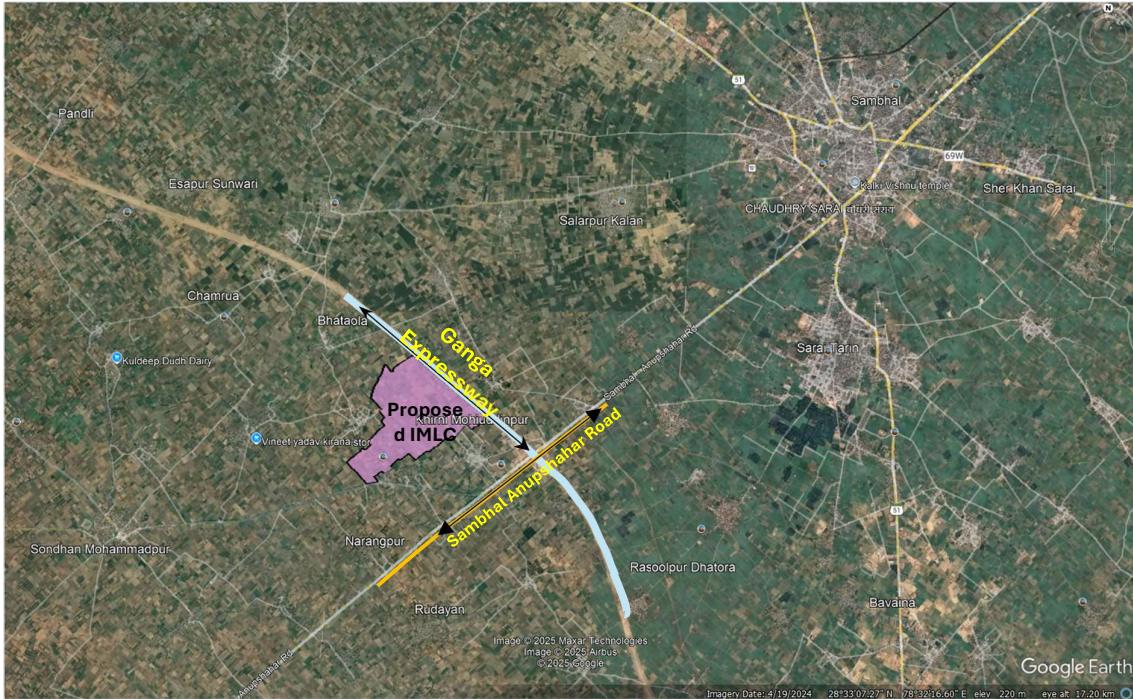


Figure 9: Proposed Site on Google Map

The details of proposed site are provided in the table below-

Sl.No.	Description	
1	Development Type	Greenfield
2	Location	This site is located in the under Sadar in Sambhal District along the Ganga Expressway at change CH-100+000 on the right-hand side (RHS) of the Ganga Expressway.
3	Lat/Long	28.540769/ 78.491098
4	Nearest Railway Station	Sambhal Hatim Sarai railway station – 10 Km,
5	Nearest ICD	ICD Moradabad – approx. 40 Km
6	Nearest Airport	<ul style="list-style-type: none"> <li>● Moradabad Airport – approx. 40 Km</li> </ul>
7	One District One Product (ODOP)	Metal Craft
8	Major Industries	<ul style="list-style-type: none"> <li>● Distilleries</li> <li>● Sugar Mill</li> <li>● Dairy Products</li> </ul>
9	Nearest Industrial Area	<ul style="list-style-type: none"> <li>● Moradabad Special Economic Zone (SEZ), located approximately 40–45 Km</li> </ul>

