

IMLC Meerut

Meerut district, located in western Uttar Pradesh, is an important urban, educational, and commercial center with its administrative headquarters at Meerut city. It shares boundaries with Muzaffarnagar, Bijnor, Hapur, Bulandshahr, and Baghpat, and enjoys excellent connectivity through NH-34, NH-709, NH-58, and NH-119, as well as the Ganga Expressway. The district is strategically positioned along the Eastern Dedicated Freight Corridor (EDFC), significantly enhancing logistics efficiency and industrial potential. Furthermore, the upcoming Delhi–Meerut Regional Rapid Transit System (RRTS) will offer high-speed commuter transit, improving access for the workforce and strengthening regional integration.

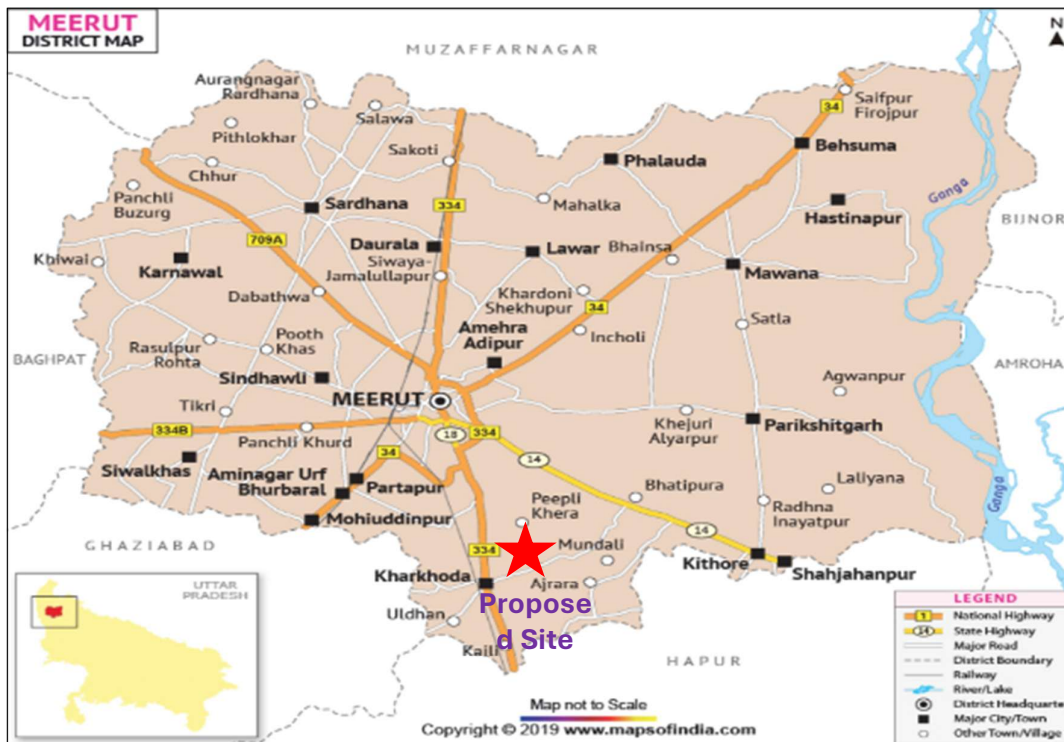


Figure 1: Location Map

The **proposed Integrated Manufacturing and Logistics Cluster (IMLC)** in **Meerut**, located in village **Bijauli and Kharkhoda** under Tehsil **Sadar** and spread over approximately **529 Acre**, is strategically positioned to maximize industrial potential. Situated just 9 km from Meerut city, the site lies at the **starting point of the Ganga Expressway, at kilometre 10 (Ch 10+000) on the right-hand side of the expressway**. It offers seamless multimodal connectivity through NH-34, the Ganga Expressway, and close proximity (approx 10 Km) Eastern Dedicated Freight Corridor (EDFC), making it highly suitable for logistics, warehousing, and a wide range of industrial activities. The location map for the proposed is represented in figure

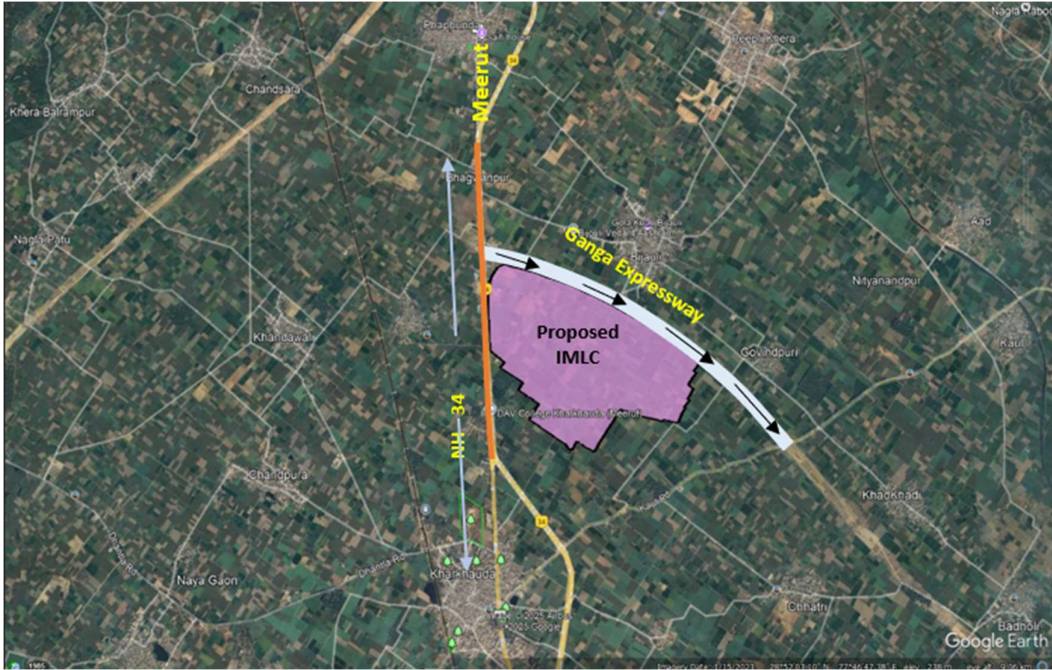


Figure 2: Proposed Site on Google

The details of proposed site are provided in the table below-

Sl.No.	Description	
1	Development Type	Greenfield
2	Location	This site is located in Tehsil Sadar of Meerut district, positioned along NH-34 and at kilometre 10+1000 (Ch-10+000 RHS) on the right-hand side (RHS) of the Ganga Expressway, near its starting point.
3	Lat/Long	28.852676/ 77.751807
4	Nearest Railway Station	Kharkhauda Station-2.0Km,
5	Nearest ICD	ICD Dadri – 80 Km
6	Nearest Airport	<ul style="list-style-type: none"> ● Hindon Domestic Airport (Ghaziabad) – 55 Km ● Jewar International Airport – 100 Km
7	One District One Product (ODOP)	Sports Goods
8	Major Industries	<ul style="list-style-type: none"> ● Sports Goods industry ● Musical Instruments industry
9	Nearest Industrial Area	<ul style="list-style-type: none"> ● Sardhana Industrial Area (Approximately 20 km north of Bijauli and Kharkhauda.) ● Meerut Industrial Area (Situated about 16 km south of Bijauli and Kharkhauda.)